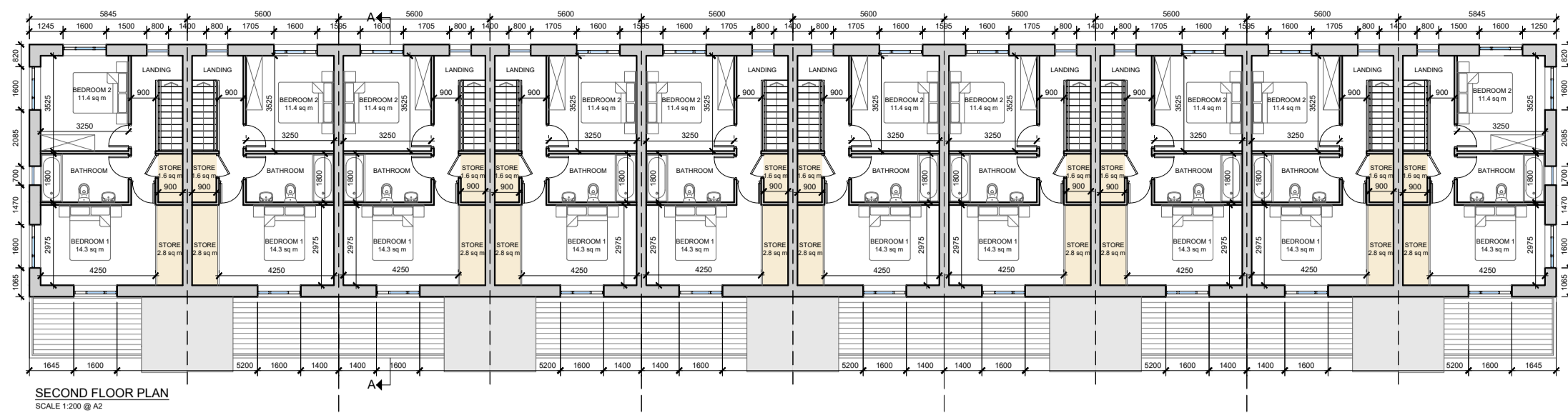
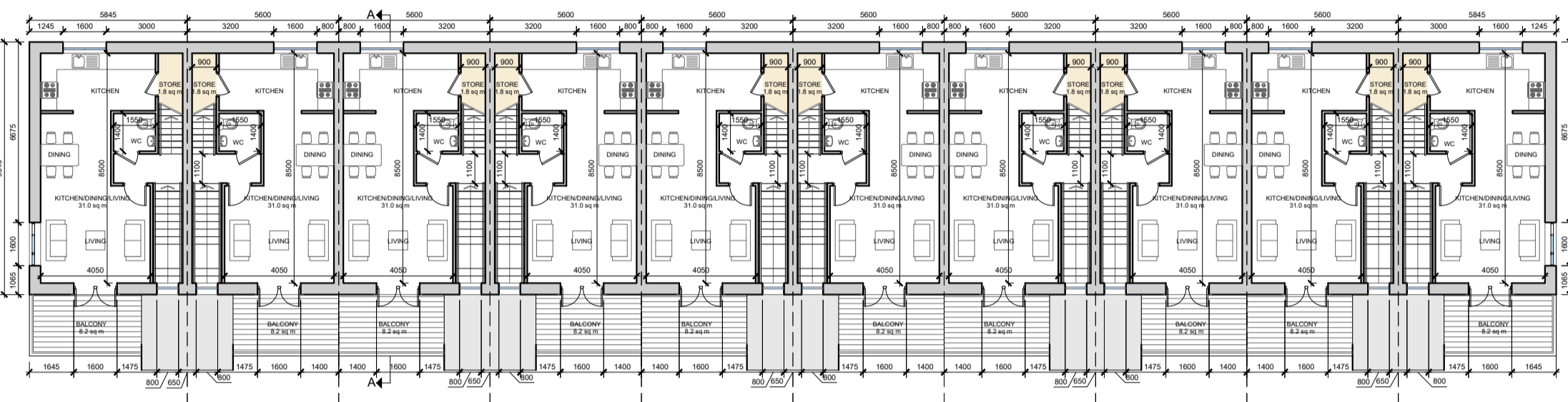


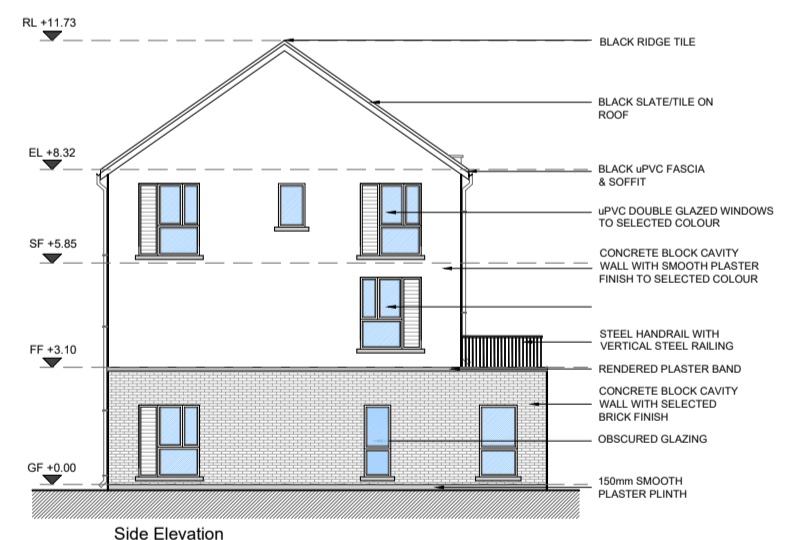
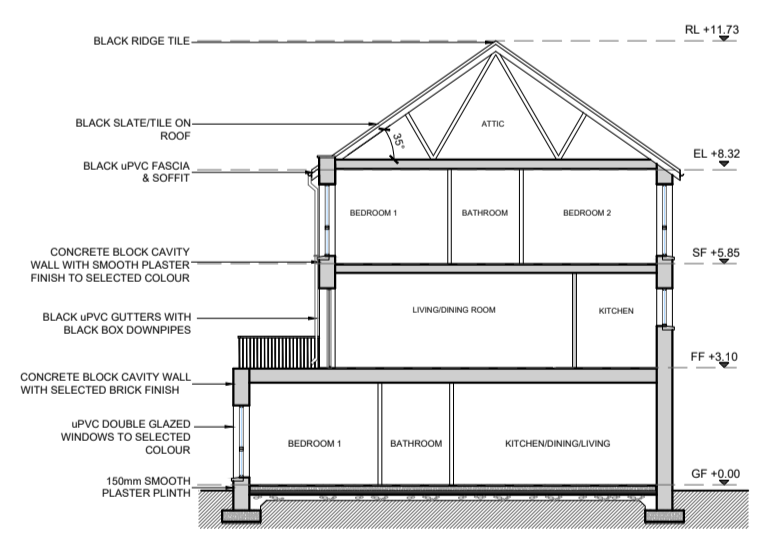
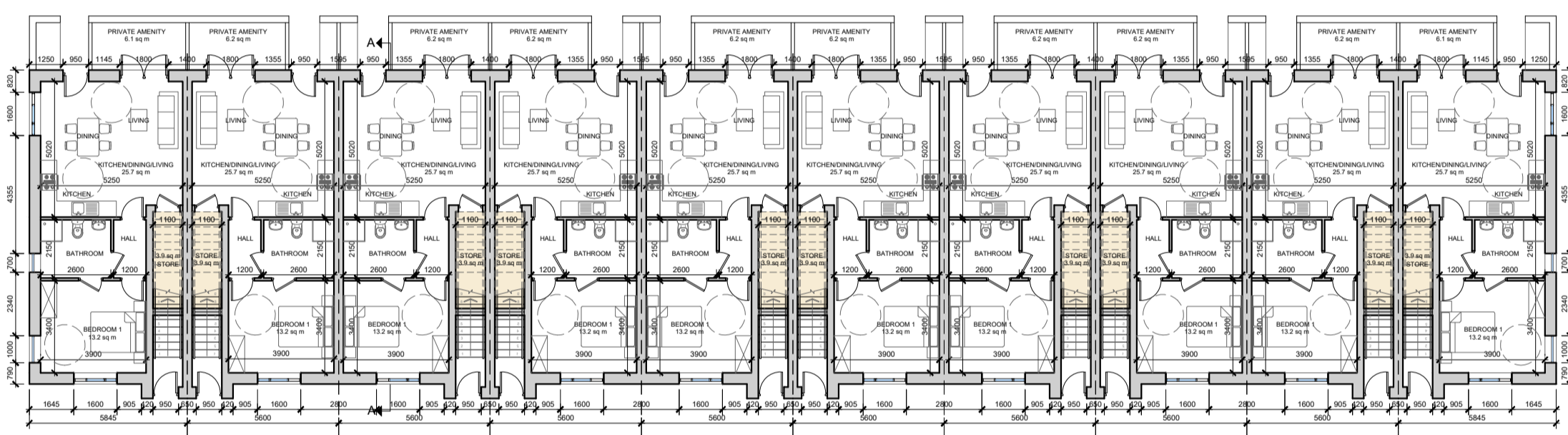
DO NOT SCALE. WORK TO FIGURED DIMENSIONS ONLY.
 ALL EXISTING DIMENSIONS TO BE CHECKED ON SITE.
 DRAWN ON AUTOCAD 2009 AT DEADY GAHAN ARCHITECTS LTD
 LAYERS ON THIS DRAWING COMPLY WITH BS 1192: PART 5



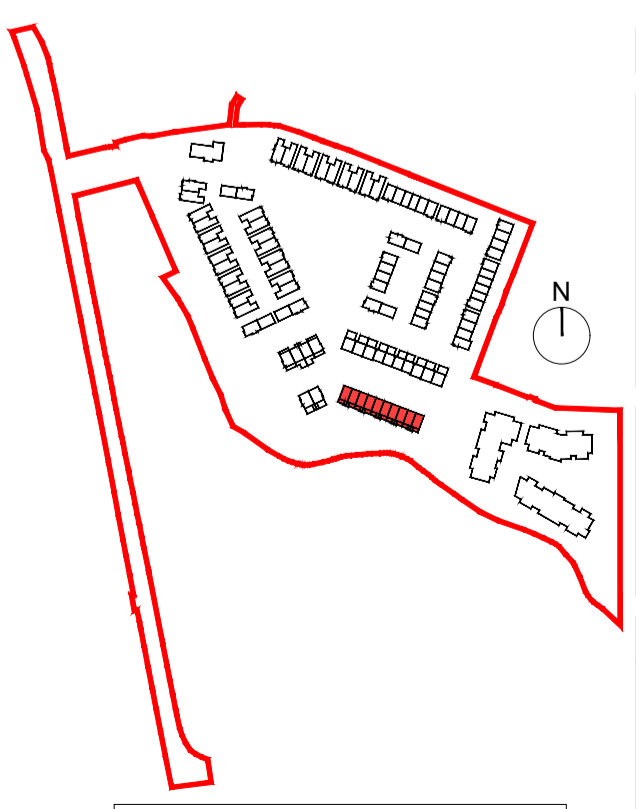
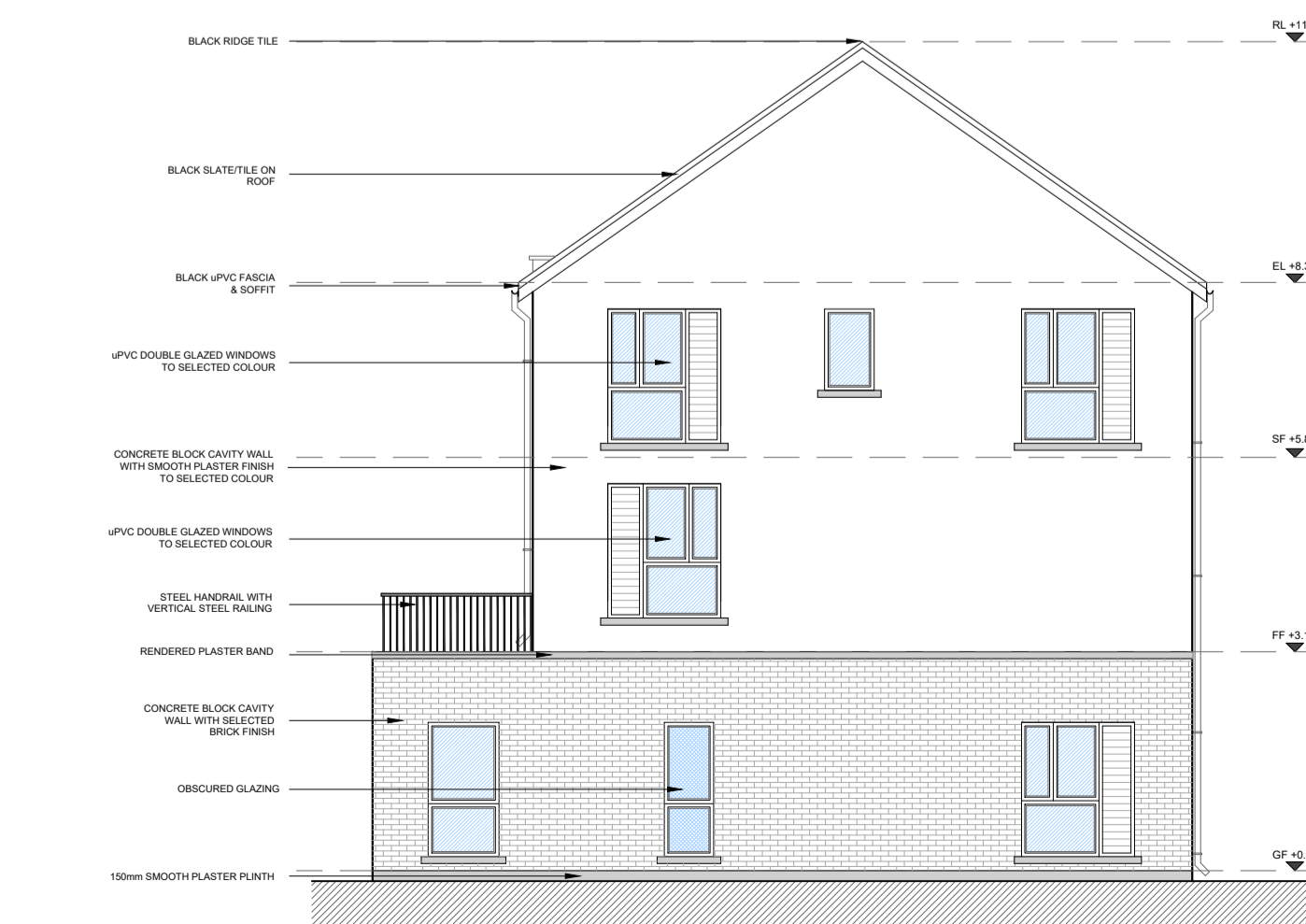
- APARTMENT / DUPLEX TYPE H4(m)**
 2-bed Duplex Apartment (4 person)
 AREA: 85.7 SQ.M. / 922 SQ.FT.
 (with access staircase and ground floor entrance = 93.4 SQ.M.)
 STORAGE total = 6.2 sq.m.
- APARTMENT / DUPLEX TYPE H2**
 2-bed Duplex Apartment (4 person)
 AREA: 85.7 SQ.M. / 922 SQ.FT.
 (with access staircase and ground floor entrance = 93.4 SQ.M.)
 STORAGE total = 6.2 sq.m.
- APARTMENT / DUPLEX TYPE H2**
 2-bed Duplex Apartment (4 person)
 AREA: 85.7 SQ.M. / 922 SQ.FT.
 (with access staircase and ground floor entrance = 93.4 SQ.M.)
 STORAGE total = 6.2 sq.m.
- APARTMENT / DUPLEX TYPE H2**
 2-bed Duplex Apartment (4 person)
 AREA: 85.7 SQ.M. / 922 SQ.FT.
 (with access staircase and ground floor entrance = 93.4 SQ.M.)
 STORAGE total = 6.2 sq.m.
- APARTMENT / DUPLEX TYPE H2**
 2-bed Duplex Apartment (4 person)
 AREA: 85.7 SQ.M. / 922 SQ.FT.
 (with access staircase and ground floor entrance = 93.4 SQ.M.)
 STORAGE total = 6.2 sq.m.
- APARTMENT / DUPLEX TYPE H4**
 2-bed Duplex Apartment (4 person)
 AREA: 85.7 SQ.M. / 922 SQ.FT.
 (with access staircase and ground floor entrance = 93.4 SQ.M.)
 STORAGE total = 6.2 sq.m.



- APARTMENT / DUPLEX TYPE H3(m)**
 1-bed Ground Floor (2 person)
 AREA: 53.9 SQ.M. / 574 SQ.FT.
 STORAGE total = 3.9 sq.m.
- APARTMENT / DUPLEX TYPE H1**
 1-bed Ground Floor (2 person)
 AREA: 53.9 SQ.M. / 574 SQ.FT.
 STORAGE total = 3.9 sq.m.
- APARTMENT / DUPLEX TYPE H1**
 1-bed Ground Floor (2 person)
 AREA: 53.9 SQ.M. / 574 SQ.FT.
 STORAGE total = 3.9 sq.m.
- APARTMENT / DUPLEX TYPE H1**
 1-bed Ground Floor (2 person)
 AREA: 53.9 SQ.M. / 574 SQ.FT.
 STORAGE total = 3.9 sq.m.
- APARTMENT / DUPLEX TYPE H1**
 1-bed Ground Floor (2 person)
 AREA: 53.9 SQ.M. / 574 SQ.FT.
 STORAGE total = 3.9 sq.m.
- APARTMENT / DUPLEX TYPE H1**
 1-bed Ground Floor (2 person)
 AREA: 53.9 SQ.M. / 574 SQ.FT.
 STORAGE total = 3.9 sq.m.
- APARTMENT / DUPLEX TYPE H3**
 1-bed Ground Floor (2 person)
 AREA: 53.9 SQ.M. / 574 SQ.FT.
 STORAGE total = 3.9 sq.m.



Apartment / Duplex Block 4 - Character Area 2



date	rev	name	chk	note
07.05.24	P1	MP	EJG	ISSUE FOR PLANNING

DEADY GAHAN ARCHITECTS

EASTGATE VILLAGE, LITTLE ISLAND, CORK
 T: 021 4355018 W: WWW.DGARCHITECTS.IE
 EMAIL: INFO@DGARCHITECTS.IE

Project: PROPOSED RESIDENTIAL DEVELOPMENT
 AT PORT ROAD, KILLARNEY, CO. KERRY

Drawing title: APARTMENT / DUPLEX BLOCK 4
 FLOOR PLANS, SIDE ELEVATIONS AND SECTION A-A

Scale: 1:100/1:200 @ A2	Drawn: PC	Checked: EJG	Date: 07.05.24
Project No: 23049	Dir. No: 23049/P/003	Revision: P1	

Information / Comments: Tender
 Planning: Construction